

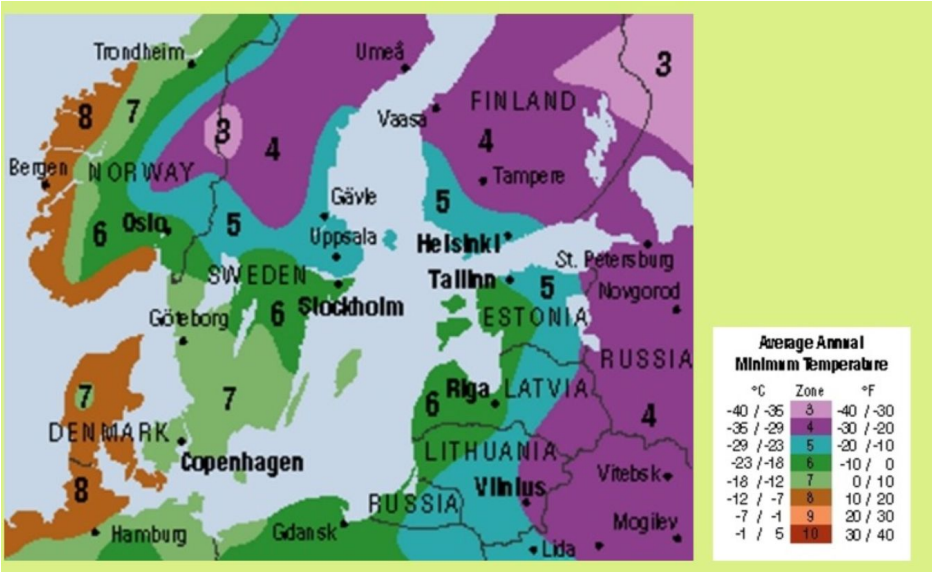
PLANTING DESIGN

FLOWER
POWER

Agnes Arumetsa
Erlend Tegneby Vegstø
Ines Doudeche
Lene Ernst
Leonie Lamport



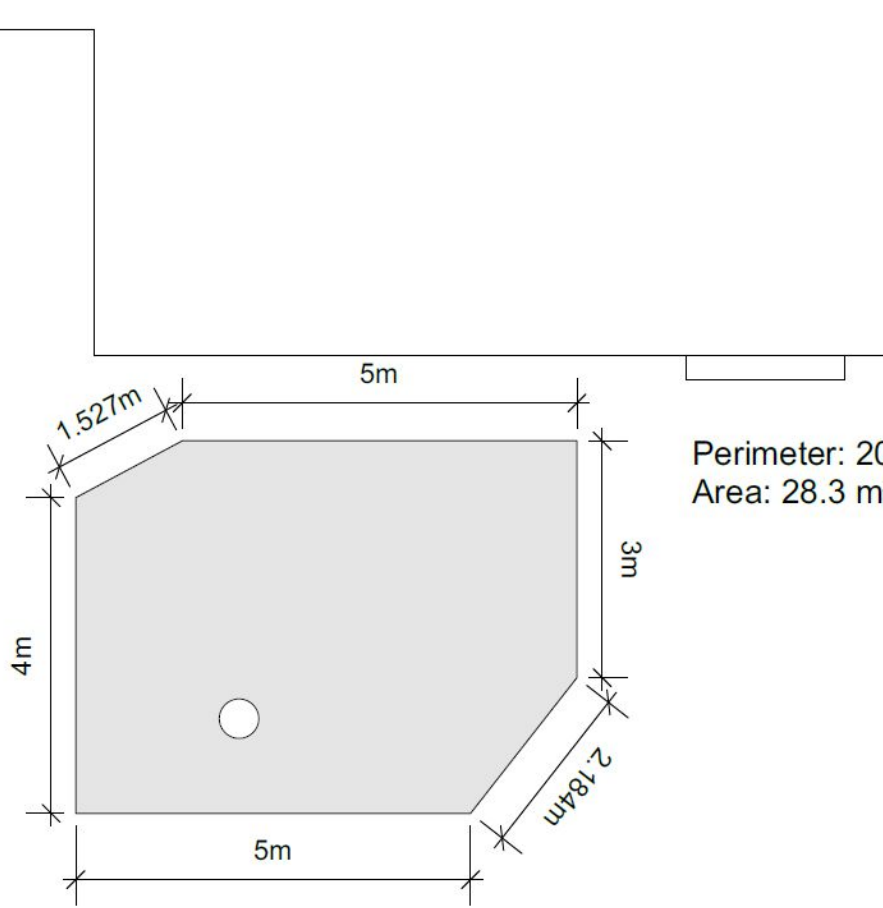
LOCATION



PROJECT AREA







Perimeter: 20.7m
Area: 28.3 m²

DESIGN OBJECTIVES & INSPIRATION

- Biodiversity with pollinator-friendly plants
- Year-round seasonal interest
- Low-maintenance species

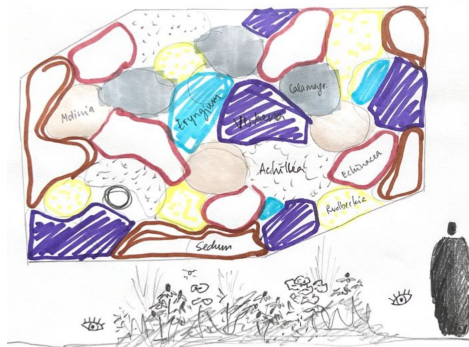
→ blending ecological function with aesthetic appeal



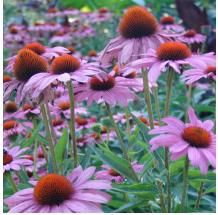
Inspired by seasonal wildflower meadows, pollinator-attracting blooms, harmonious layering of colours and heights

Keywords: Harmony, biodiversity, seasonality

INSPIRATION



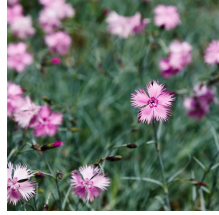
PLANT SELECTION



*Echinacea
purpurea*



*Verbena
bonariensis*



*Dianthus
plumarius*



*Aquilegia
vulgaris*



*Salvia
nemorosa*



*Eryngium
planum*



*Centaurea
cyanus*



*Camassia
leichtlinii*



Tulipa turkestanica



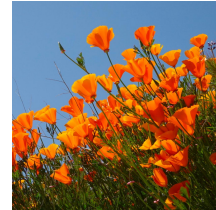
Stipa barbata



*Stachys byzantina
'Silver Carpet'*



Achillea ptarmica



*Eschscholzia
californica*



*Tulipa
'Ballerina'*



*Rudbeckia fulgida
var. deamii*

PLANTS' SPECIAL NOTES

self-seeding plants



Eschscholzia



Centaurea



Aquilegia



Achillea

bee-friendly plants



Aquilegia



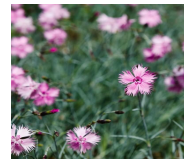
Salvia



Eryngium



Centaurea



Dianthus



Achillea

(semi-) evergreen plants



Dianthus



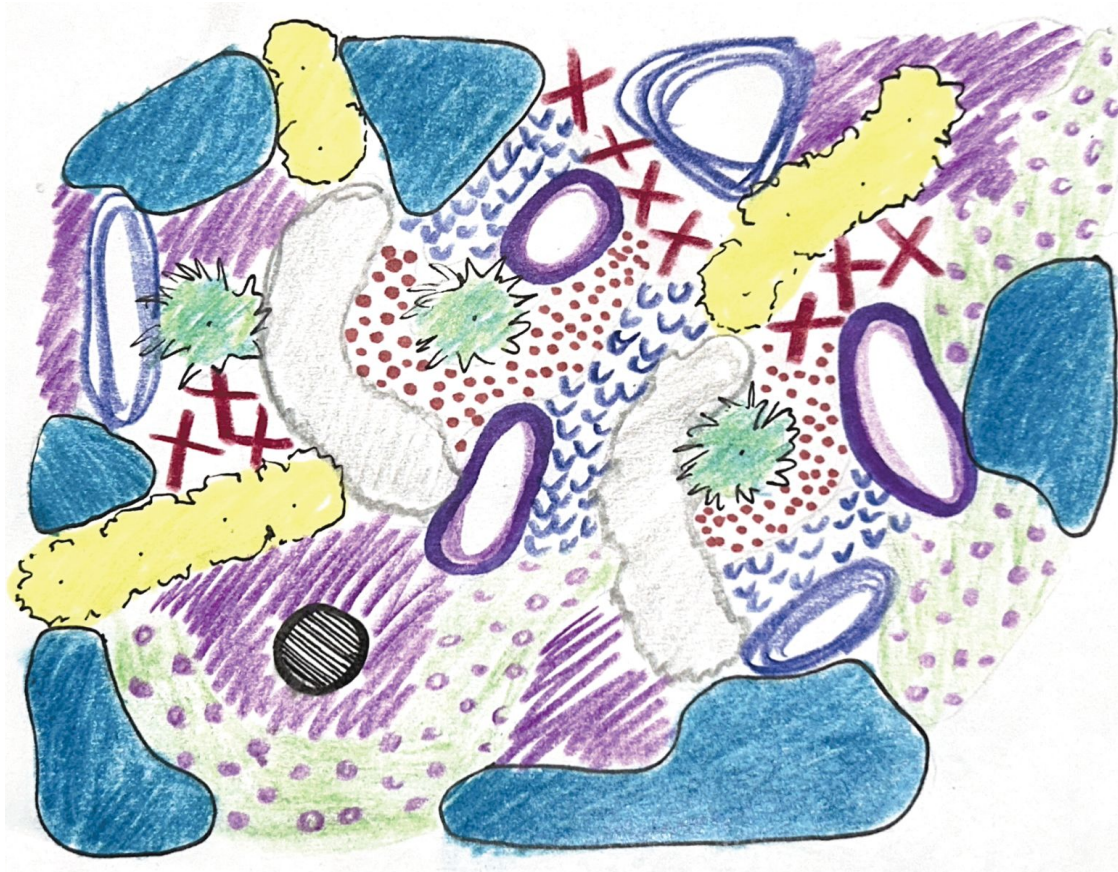
Stipa



Stachys



Eryngium



Stachys byzantina - H 20 cm (35 plants)

Salvia nemorosa - H 40 cm (41 plants)

Dianthus plumarius - H 50 cm (60 plants)

Stipa barbata - H 90 cm (3 plants)

Eryngium planum - H 50 cm (13 plants)

Echinacea purpurea - H 80 cm (10 plants)

Achillea ptarmica - H 70 cm (10 plants)

Verbena bonariensis - H 140 cm (10 plants)

Tulipa turkestanica - H 30 cm (87 plants)

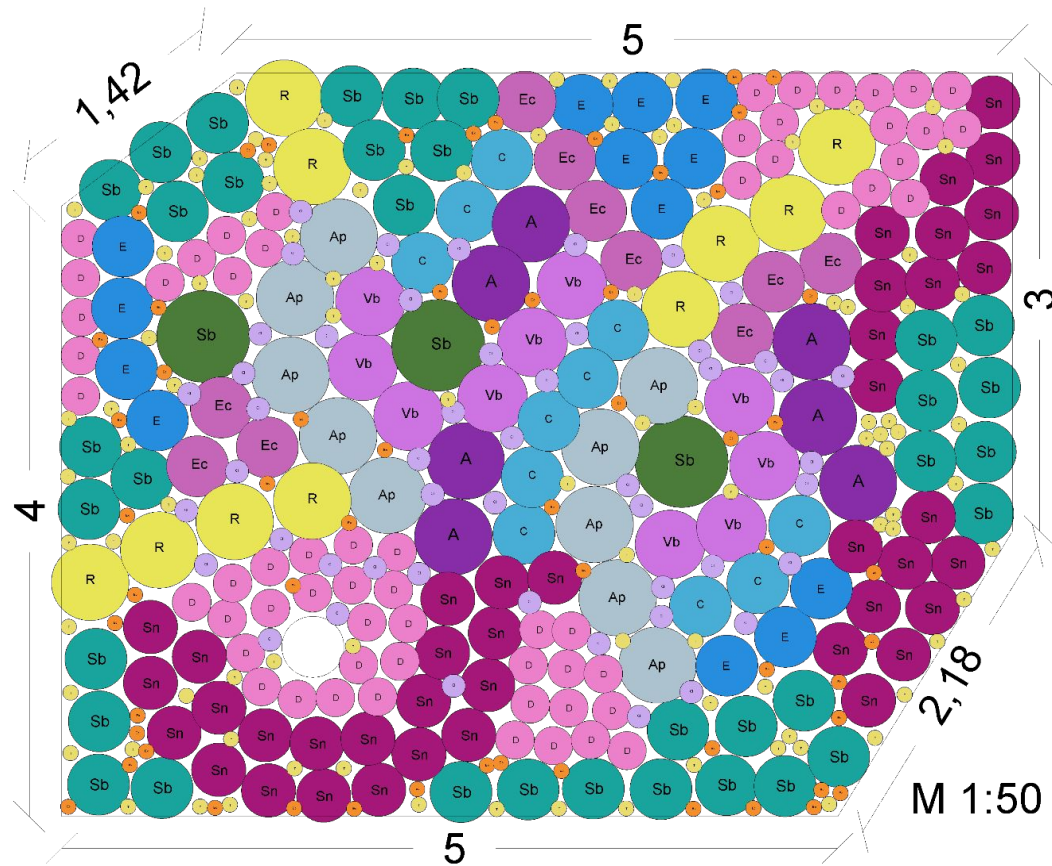
Rudbeckia fulgida - H 70 cm (10 plants)

Centaurea cyanus - H 80 cm (11 plants)

Aquilegia vulgaris - H 60 cm (7 plants)

Eschscholzia californica - H 30 cm (43 plants)

Camassia leichtlinii - H 80 cm (49 plants)



-  Sb Stachys byzantina - H 20 cm (35 plants)
-  Sn Salvia nemorosa - H 40 cm (41 plants)
-  D Dianthus plumarius - H 50 cm (60 plants)
-  Sb Stipa barbata - H 90 cm (3 plants)
-  E Eryngium planum - H 50 cm (13 plants)
-  Ec Echinacea purpurea - H 80 cm (10 plants)
-  Ap Achillea ptarmica - H 70 cm (10 plants)
-  Vb Verbena bonariensis - H 140 cm (10 plants)
-  T Tulipa turkestanica - H 30 cm (87 plants)
-  R Rudbeckia fulgida - H 70 cm (10 plants)
-  c Centaurea cyanus - H 80 cm (11 plants)
-  A Aquilegia vulgaris - H 60 cm (7 plants)
-  T Tulipa „Ballerina“ - H 60 cm (55 plants)
-  C Camassia leichtlinii - H 80 cm (49 plants)

M 1:50

PLANTING LAYOUT & ZONES

- **Zone 1:** Short ground covers and bulbs (e.g., *Tulipa turkestanica*, *Stachys byzantina*)
- **Zone 2:** Medium-height perennials (e.g. *Eryngium planum*, *Achillea ptarmica*)
- **Zone 3:** Tall focal plants (e.g. *Verbena bonariensis*, *Rudbeckia fulgida*)



Plants grouped by height and bloom season for continuous interest

DYNAMIC & GROUP PLANTINGS

Dynamic plantings

Self-seeders; movement & growth; focus on creating ever-changing, naturalistic plantings that evolve with the season, promoting ecological resilience and visual interest



Group plantings

Plants are arranged in complementary clusters or 'mosaics', ensuring efficient use of space and creating a pattern that feels both intentional and natural; layering for depth; ecological compatibility



BLOOMING VISUAL SPRING



BLOOMING VISUAL AUGUST



THANK YOU!

FLOWERPOWER 2024