

WHO DARES

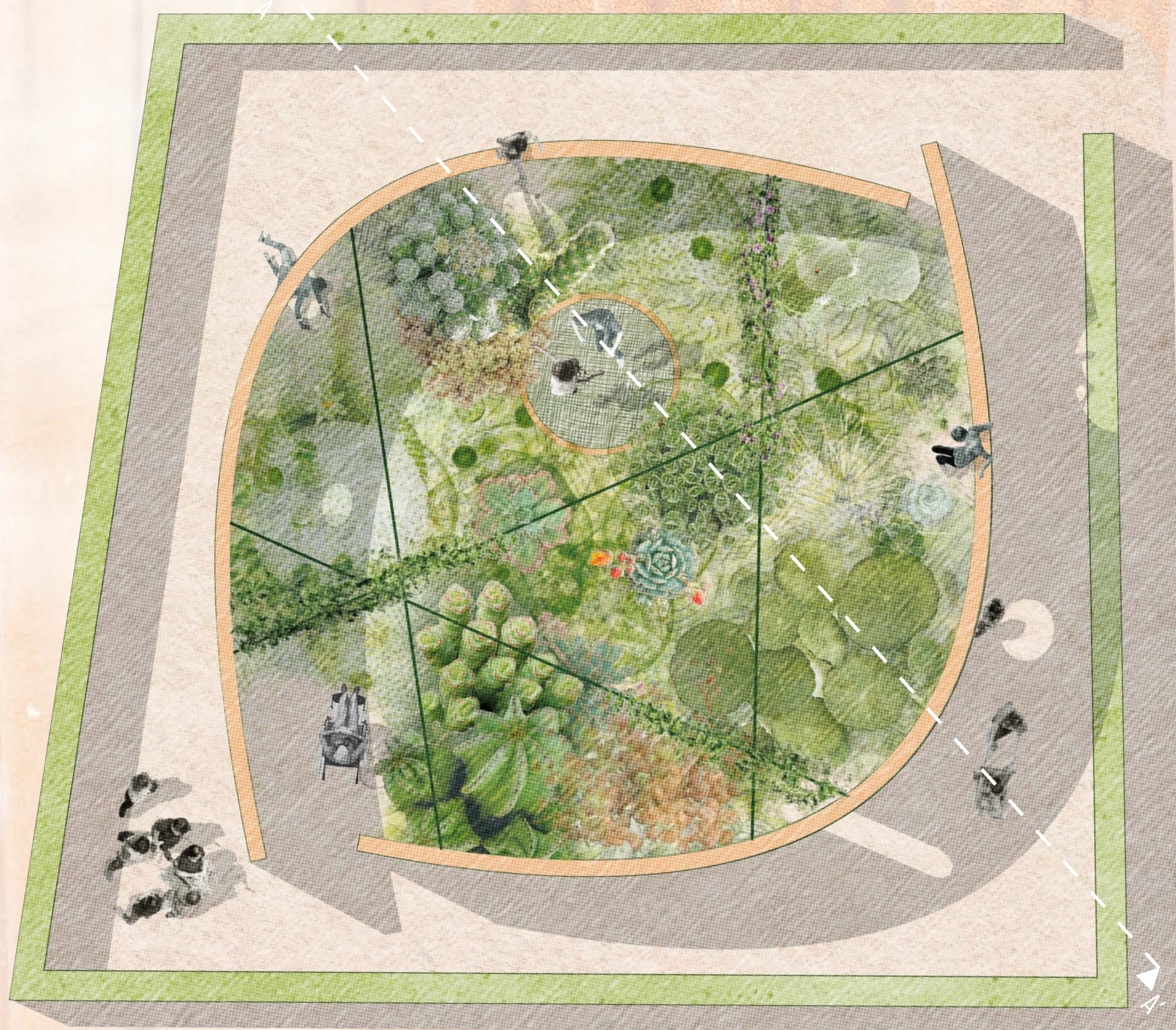
QUEM SE ATREVE

Who dares to enter my dream?

Our concept captures a dream, enclosed within a 2.5-meter wall. Through narrow openings, glimpses of the inner world appear – inviting those who dare to enter. The hidden entrances must be discovered: One may crawl, climb, or slip inside, though a barrier-free access also exists. Within lies a surreal wilderness where arid and lush plants co-exist. Structures of varying heights intertwine, and vines cascade from delicate frames, creating an otherworldly landscape that defies natural order. There is no set path – visitors drift freely through layers of curtains that reveal or conceal the dream, sparking moments of curiosity and discovery. Entering the dream is the true challenge and reward. Those who find their way inside encounter an unexpected surprise: A trampoline hidden among lush vegetation, turning the dream into a playful, weightless experience that remains full of wonder until the very end.

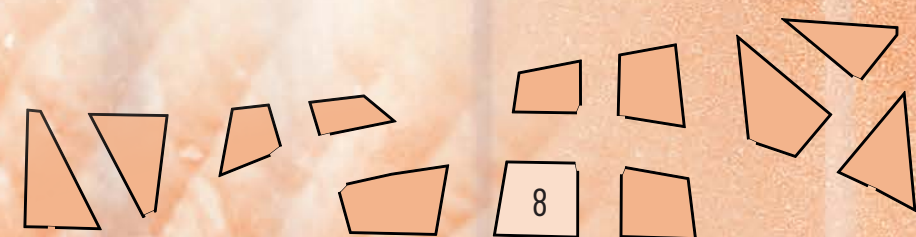
Elements and materials

The exterior of the dream is plain and unremarkable: A water-bound surface surrounds the enclosure. Etched into the wooden planks, a challenge awaits: *Who dares to enter my dream?* Inside, scattered stepping stones weave subtly through the planting toward the hidden trampoline. Eye-catching elements such as driftwood and rocks enhance the surreal atmosphere, while a fine metal framework supports climbing plants, hanging planters, and linen curtains printed with botanical motifs. Together, the construction and lush vegetation form a dense, green world where one can become completely immersed, losing all sense of direction or gravity, as if drifting within a dream.



floor plan

scale 1:75



plot location



layered, printed curtains further blur the sense of reality



cascading vines and hanging planters create a lush green ceiling



section A-A'

scale 1:50

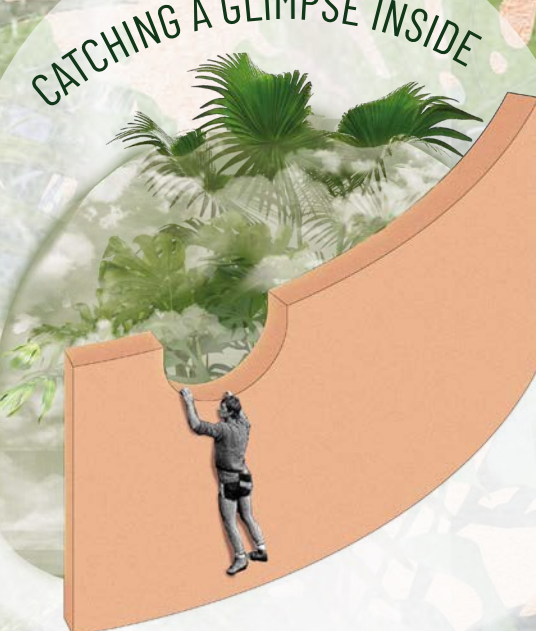


Planting concept

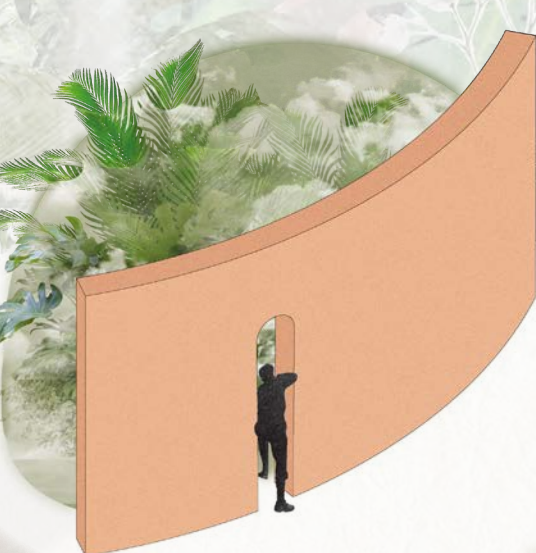
The dream is composed of three different plant habitats. Lush, tropical species, arid vegetation as well as aquatic plants grow side by side, creating a new and dreamlike landscape.

Water management concept

Through slight topographical variations, surface water is guided and collected, creating diverse moisture conditions: Shallow depressions form wetter zones for tropical plants (e.g. *Strelitzia reginae*, *Colocasia esculenta*), while elevated ridges remain dry and suit arid species (e.g. *Opuntia ficus-indica*, *Alyssum saxatile*). Two sunken water basins provide ideal habitats for aquatic plants such as *Nymphaea* sp. and *Equisetum hyemale*.



CATCHING A GLIMPSE INSIDE



SQUEEZING INTO



ENTERING WITHOUT A HASSLE

21. Festival Internacional de Jardins
Ponte de Lima
GARDEN OF DREAMS

WHO DARES
QUEM SE ATREVE

Luis Berner
Patricia Deiss
Amelie Haid
Nadine Nachtmann

Teacher:
Roland Wück
Student Assistant:
Julia Wurm