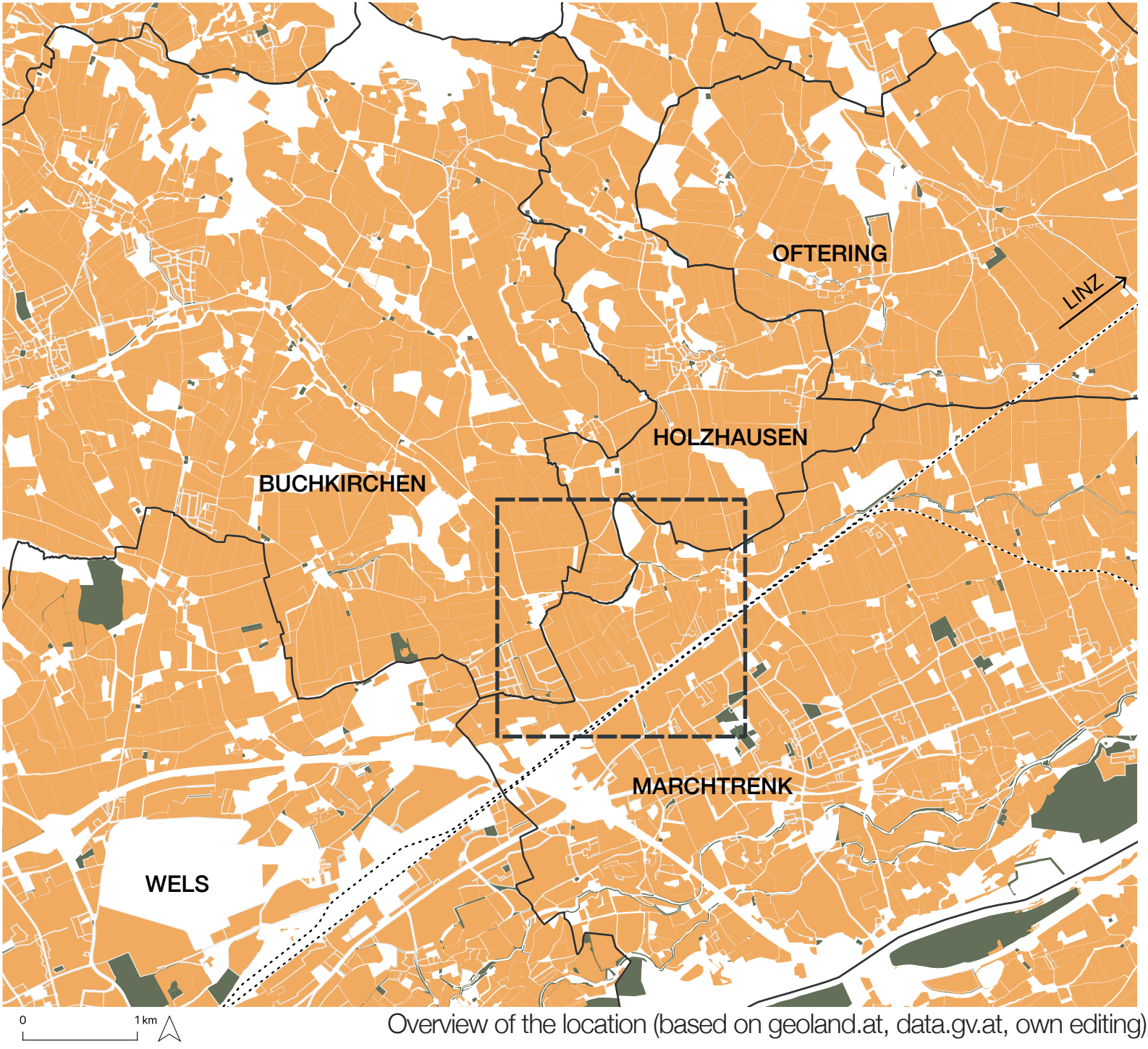


PRODUCTIVE LANDSCAPE

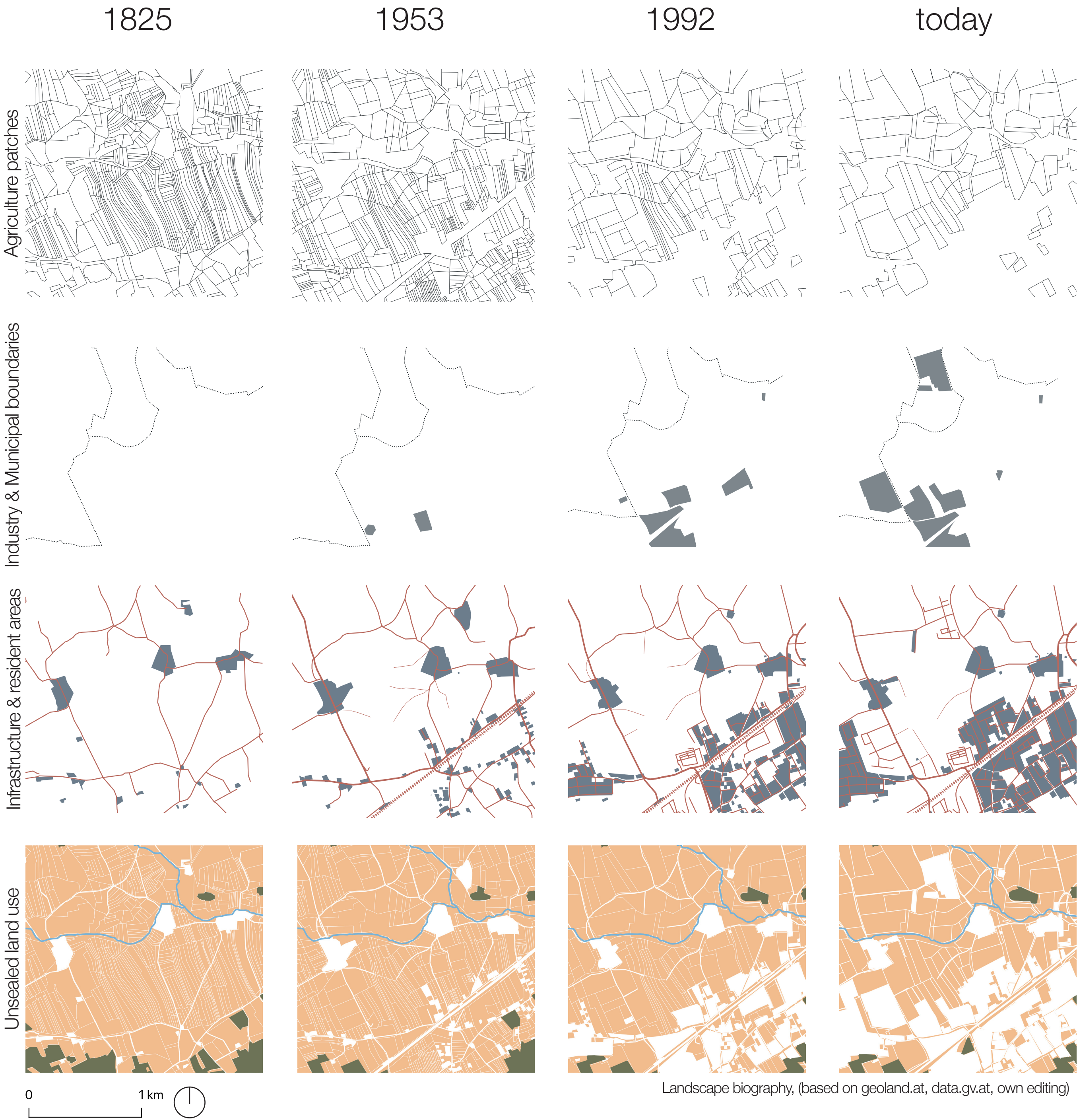
Marchtrenk



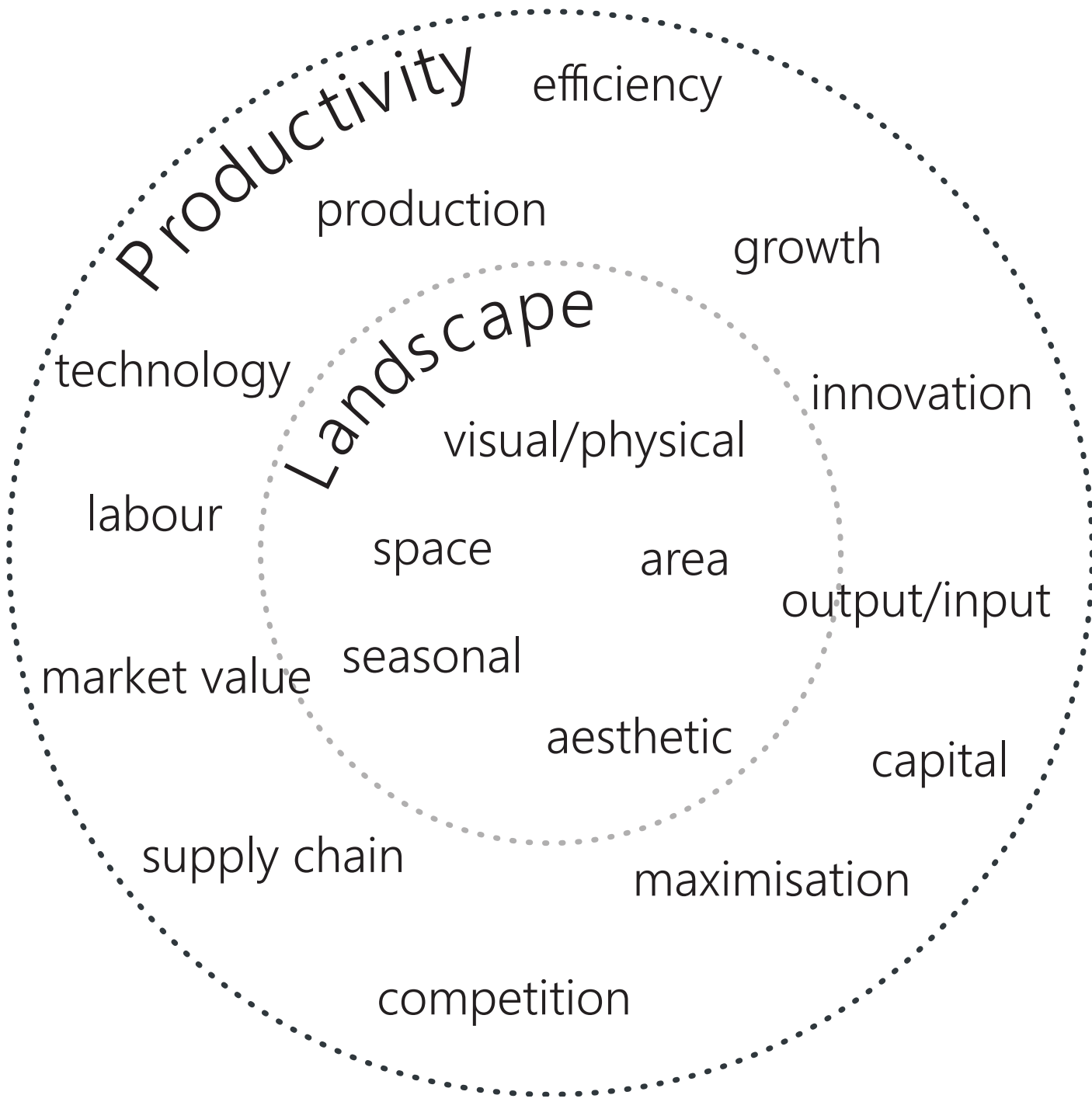
The peri-urban municipality between Wels and Linz has developed into a highly productive landscape thanks to the expansion of infrastructure and industry as well as the intensification of agriculture. It is the composition of the landscape that allows us to be productive. At the same time productivity affects and changes the landscape.

Production & Heterogeneity

The value of economic productivity becomes apparent when moving through the landscape of Marchtrenk. The feeling occurs that the landscape is composed of productive patches that lie next to each other but are not connected. A heterogeneous landscape. In his essay 'Of Other Spaces: Utopias and Heterotopias', Foucault describes heterogeneity as managed 'otherness' and opposition, which has the power to juxtapose several spaces in one place that are incompatible in themselves. In this way, opposites are strategically organised to create not only a sense of completeness but also a perception of order. Furthermore, heterogeneous places require certain processes or actions to be allowed to stay in them. The demand to be productive is perceptible in the landscape of Marchtrenk. You therefore must be productive to be justified as part of the landscape.



Productivity and Landscape



Legend for the productive patches map

(DORIS, geoland.at, open.data.gv.at)

- Baulandwidmung**
 - Dorfgebiet
 - Kerngebiet
 - Wohngebiet
 - Bestehende Wohngebäude im Grünen
 - Gemischtes Baugebiet
 - Eingeschränktes gemischtes Baugebiet
 - Betriebsgebiet
- Grünlandsonderausweisungen**
 - Land- und Forstwirtschaft, Ödland
- Grünlandsonderwidmungen**
 - Friedhof, Grünzug, Trenngrün, Parkanlage, Sport- und Spielfläche
- Bahninfrastruktur**
 - Schnellbahn
- Agrarkulturen**
 - Feldgemüse einkulturig
 - GLÖZ Feldgehölz/Baum-/Gebüschgruppe
 - GLÖZ Hecke/Ufergehölz
 - GLÖZ Rain/Böschung/Trockensteinmauer
 - GLÖZ Teich/Tümpel
 - Grünbrache
 - Grünlandbrache
 - Kleegrass
 - Kleegrass/Silomais
 - Körnermais
 - Mähwiese/-weide 3 und mehr Nutzungen
 - Mähwiese/-weide 2 Nutzungen
 - Ölkürbisse
 - Sojabohnen
 - Sommerackerbohnen
 - Sommerhafer
 - Sonstige Ackerflächen
 - Sonstige Grünlandflächen
 - Sonstiges Feldfutter
 - Speisekartoffel/Feldgemüse
 - Tafeläpfel
 - Wein
 - Wintergerste
 - Wintererbsen
 - Winterroggen
 - Wintertriticale
 - Winterweichweizen
 - Zuckerrüben



THE RIGHT TO BE (UN)PRODUCTIVE

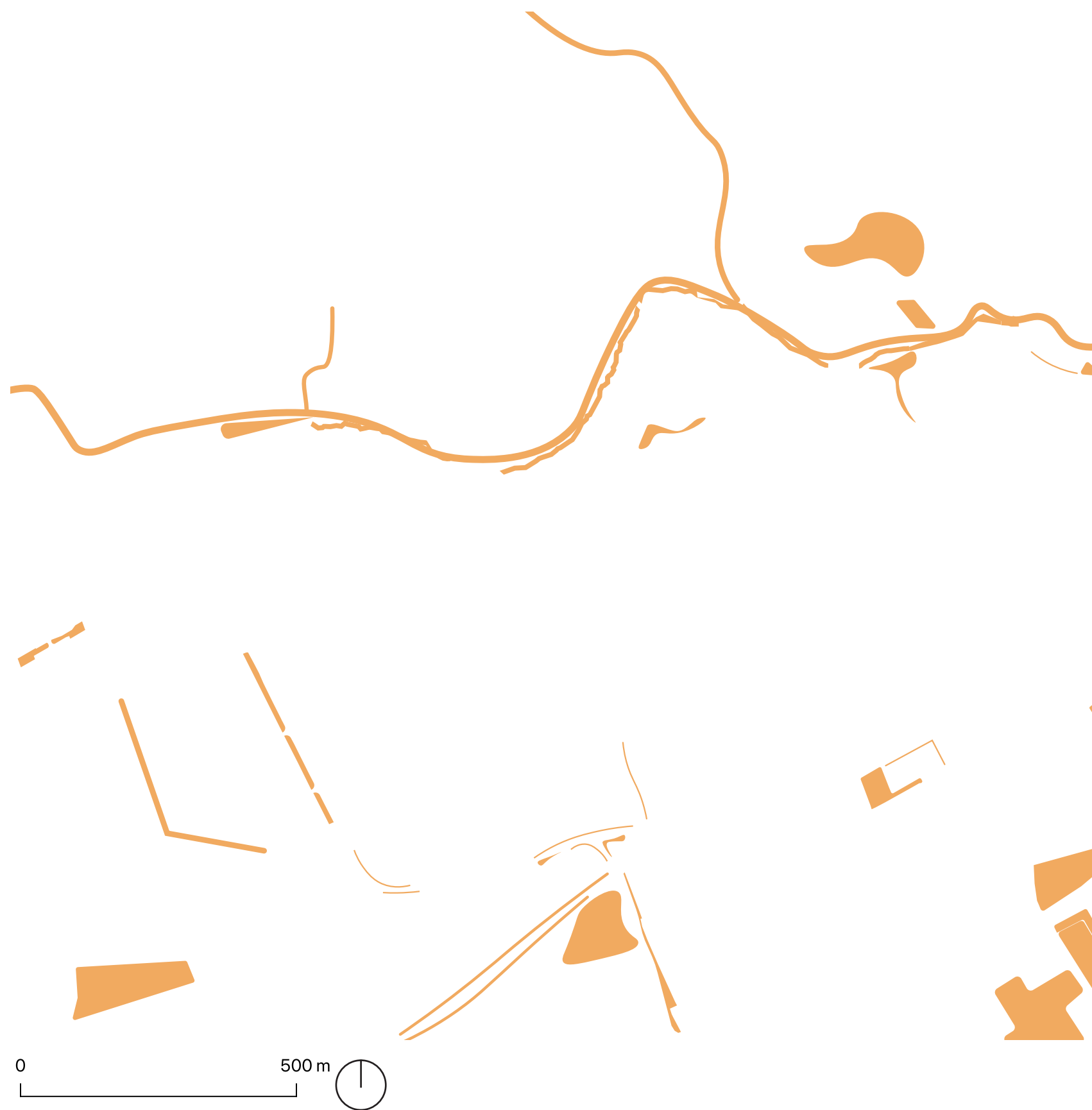
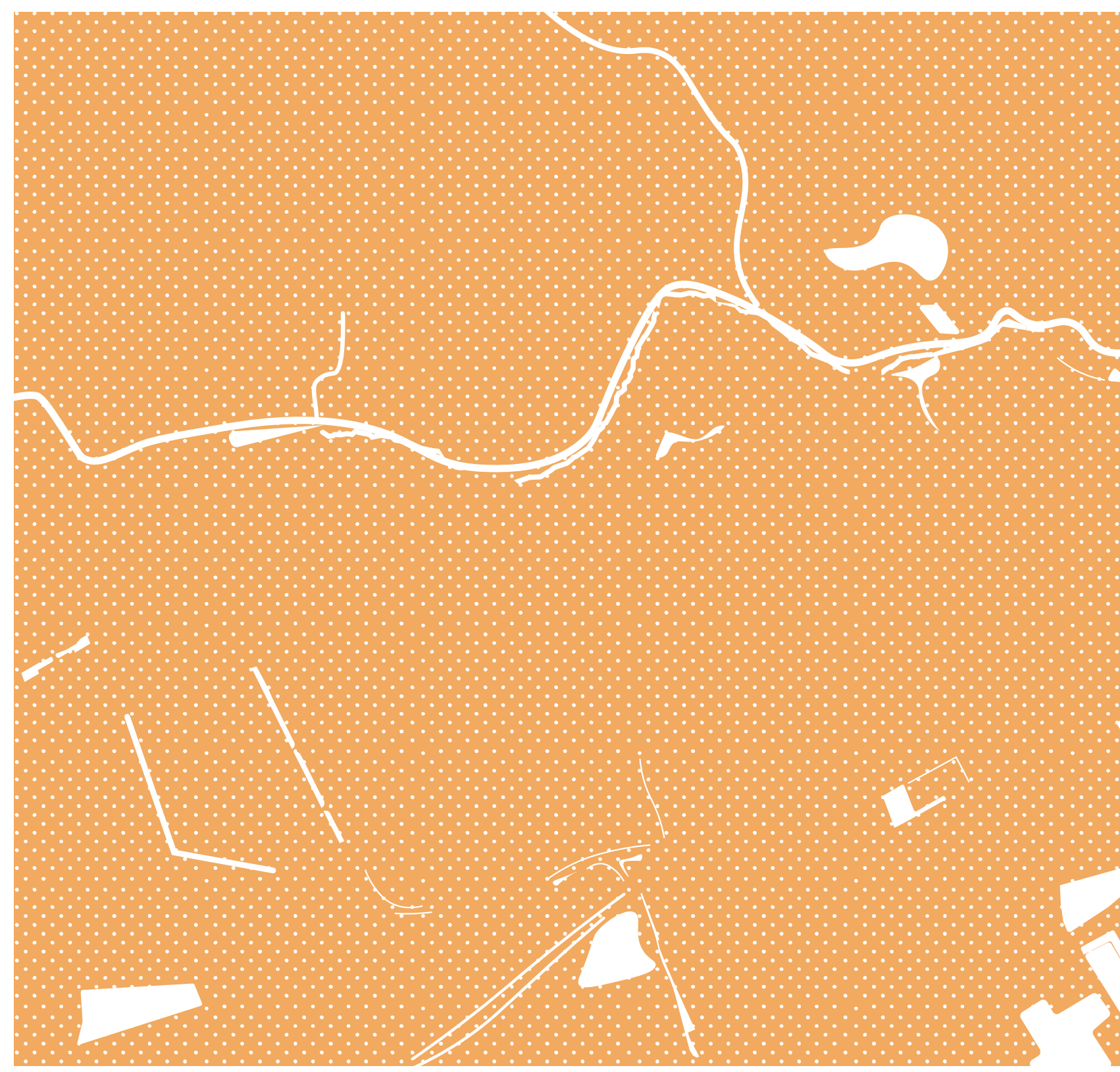


Figure and counter-figure showing the productive land above and unproductive land on the right. Almost the entire landscape consists of productive patches, leaving little area for spaces of unproductivity. The darker orange on the right shows the only land labelled as unproductive according to the zoning plan.

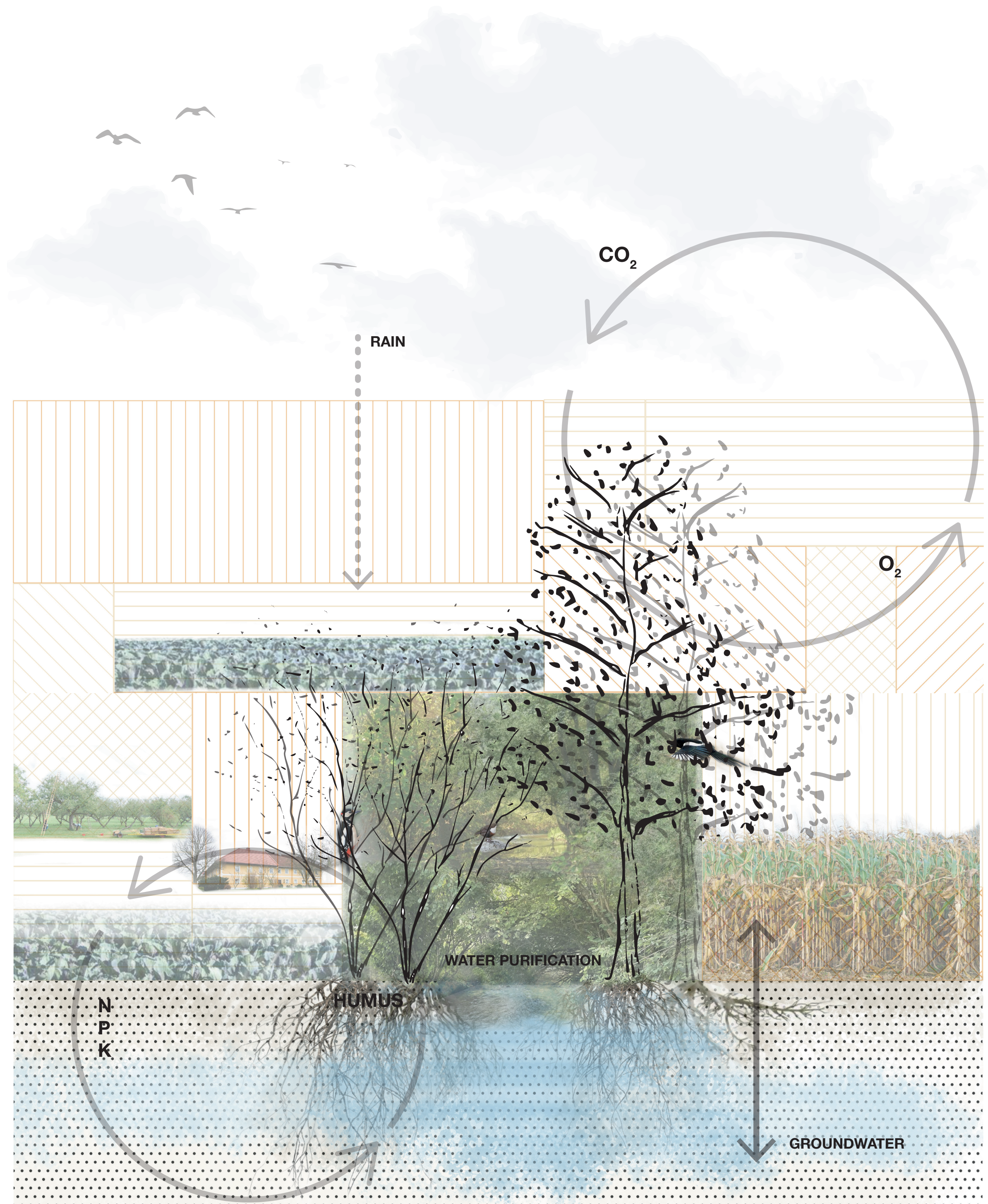


Figure of processes in the unproductive patches. Even though the land is defined as unproductive, the patches have a value and their own set of processes, interacting and supporting the productive patches.

Creating an unproductive carpet

In today's landscape of Marchtrenk, there are only a few unproductive patches to be found. But couldn't these patches make a significant contribution to connecting the productive patches, thereby creating a landscape carpet that is still heterogeneous but interwoven? The concept aims to give value to unproductive areas of the landscape in the form of space, weaving the landscape together.

