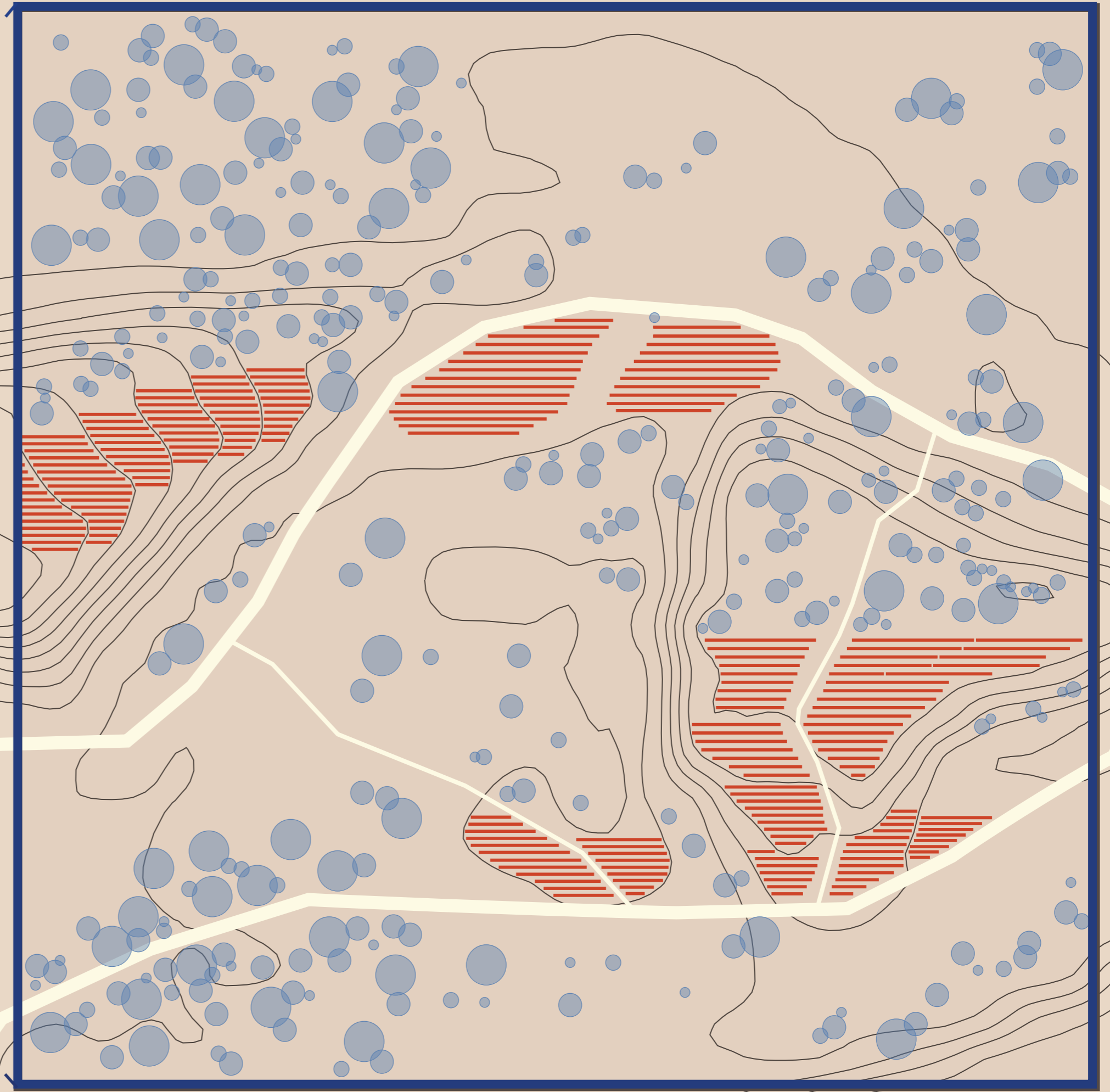


005 post productive energy scapes

a landscape that opens and closes

Solar energy and nature

In post productive energy scapes, solar energy and nature come together to form a landscape for the future. While a solar field is widely considered as ugly and an obstruction in the landscape, it also offers opportunities to create a unique park that allows its visitors to be guided these large constructions while still enjoying their surrounding nature.

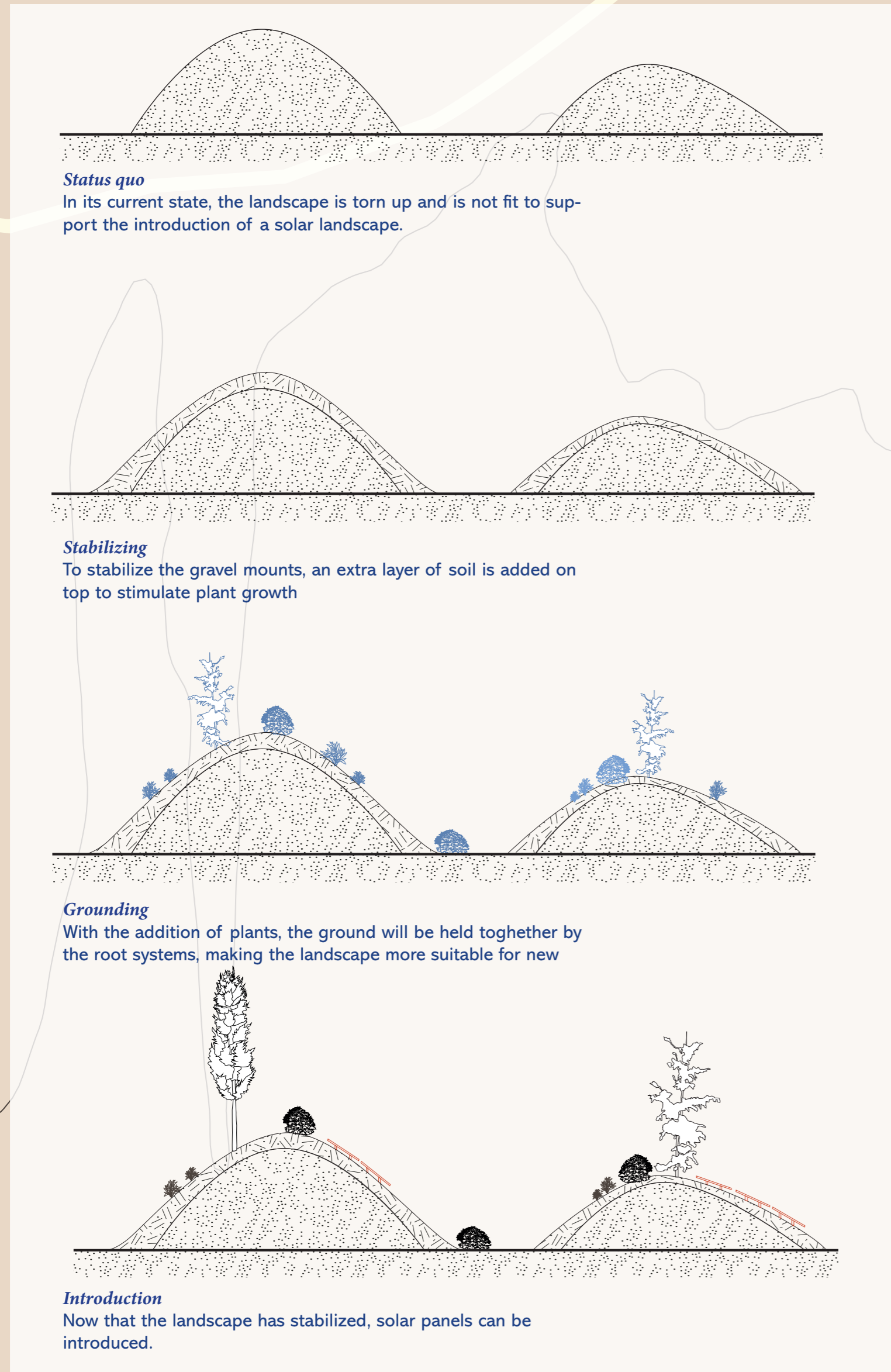


Opened and closed up grounds

The extraction site gave opportunities to insects who use open grounds as their habitats, while introducing new vegetation to this bare landscape, it is important to not close everything, but also keep some open ground.

Solar fields lead the way

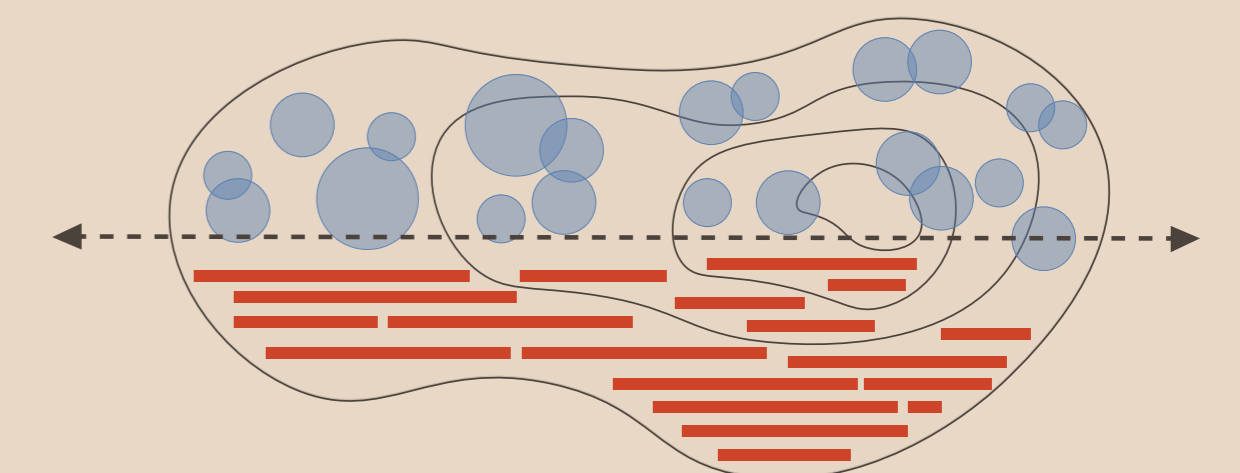
The landscape filled with patches of solar fields steers its visitors in certain directions to walk through the solar fields, walk past them or maybe view them from a higher point



Different pathways, different experiences
Walking through the solar landscape, might bring different experiences depending on the type of walkway. Experience a nice stroll with a friend on a wider walkway or experience the landscape by yourself on the narrow paths.



Hidden treasures
Not every part of the landscape can be seen at the same time. Some of the vegetation is hidden beneath the walkways so visitors don't disturb the habitats there.



Separation
The gravel mounts can be divided up into two parts: the south facing side, covered with solar panels and the north facing side, covered in trees and other vegetation.